



53216 Thrust ball bearings, single direction

- Popular item

Thrust ball bearings, single direction

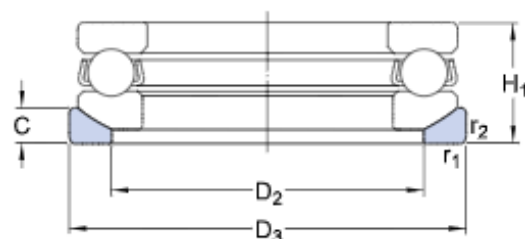
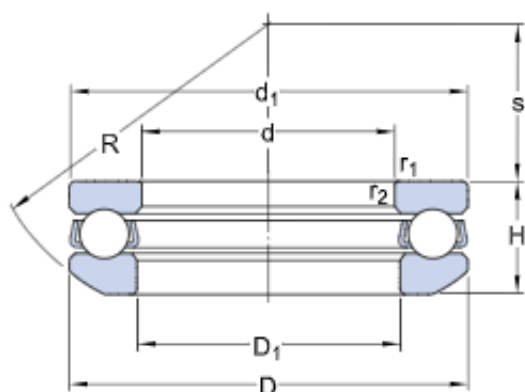
Bearing data

[Tolerances,](#)
table 1

Bearing interfaces

[Seat tolerances for standard](#)
[conditions,](#)
[Tolerances and resultant fit](#)

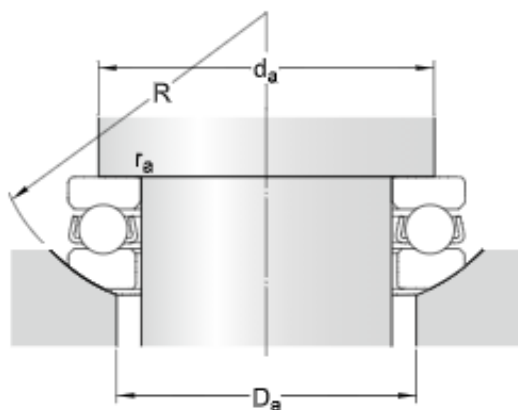
Technical specification



DIMENSIONS

d	80 mm	Bore diameter
D	115 mm	Outside diameter
H	29.5 mm	Height
H ₁	33 mm	Height bearing including seat washer
d ₁	≈ 115 mm	Outside diameter shaft washer
D ₁	≈ 82 mm	Inner diameter housing washer
D ₂	98 mm	Inner diameter sphered seat washer
D ₃	120 mm	Outside diameter sphered housing washer
C	10 mm	Height sphered housing washer
R	90 mm	Radius sphered housing washer
s	46 mm	Centre height housing washer sphere
r _{1,2}	min. 1 mm	Chamfer dimension washer

ABUTMENT DIMENSIONS



d_a min. 101 mm Abutment diameter shaft

D_i max. 98 mm Abutment diameter housing

r_a max. 1 mm Fillet radius



CALCULATION DATA

C	76.1 kN	Basic dynamic load rating
C_0	208 kN	Basic static load rating
P_u	7.65 kN	Fatigue load limit
	2 400 r/min	Reference speed
	3 200 r/min	Limiting speed
A	0.22	Minimum load factor

MASS

1.1 kg	Mass bearing (including seat washer where applicable)
--------	---

ASSOCIATED PRODUCTS